

RAIL BALTICA PROJECT – **Building a New Economic Corridor**

**JOINT
CHAMBER
BUSINESS
BREAKFAST
31/01/2018**

**JĀNIS DRIPE – ARCHITECT, CHAIRMAN OF
INTERNATIONAL JURY FOR *RAIL BALTICA* RIGA
TERMINAL, BRIDGE & EMBANKMENT**

EIROPAS DZELZCEĻA LĪNIJAS

RAIL BALTICA PROJECT, RIGA STATION – ASPIRATION FOR THE FUTURE

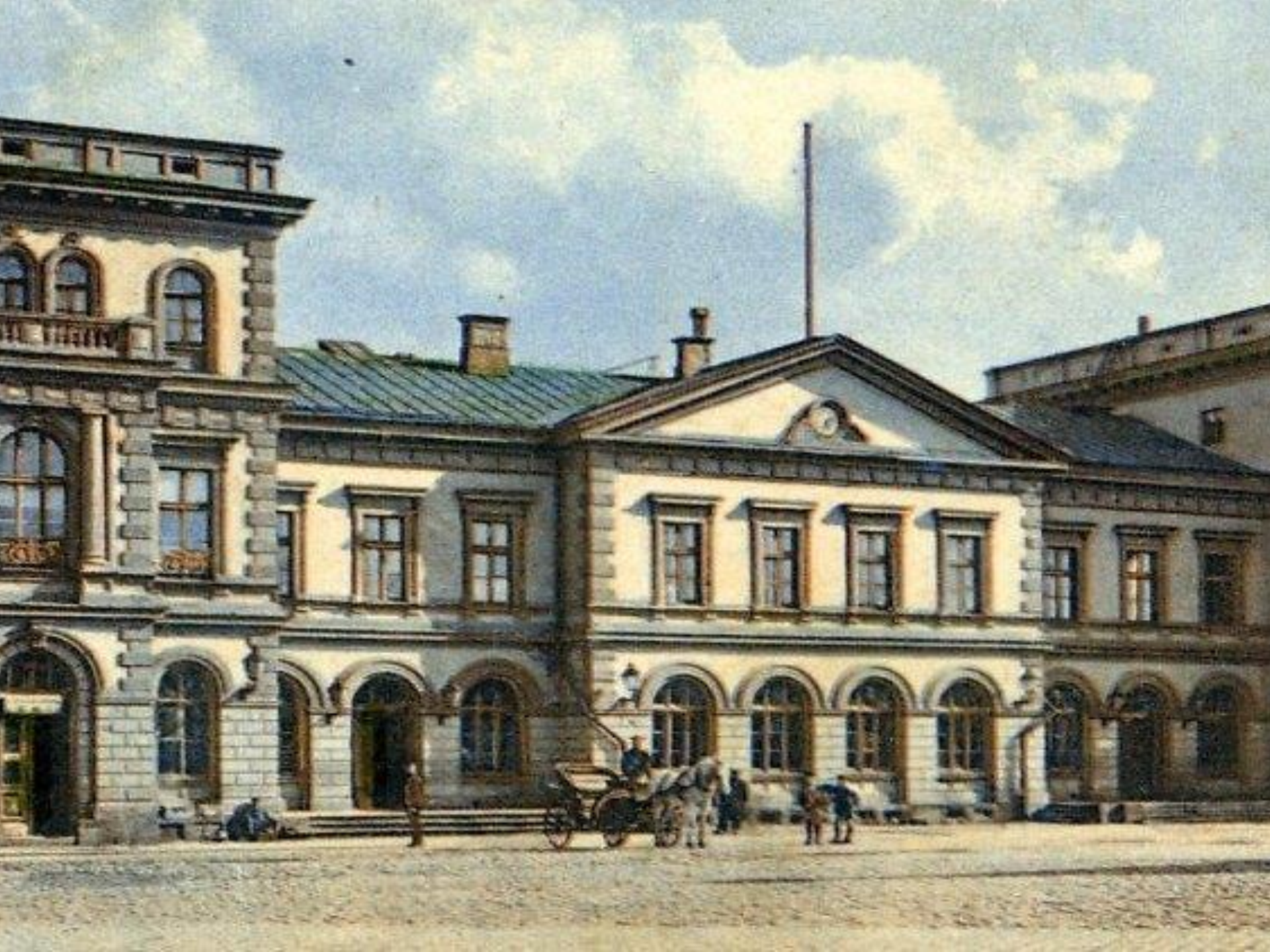
2016/2017 – INTERNATIONAL SKETCH DESIGN COMPETITION,
15 ENTRIES FROM 8 COUNTRIES,
2 SECOND PRIZES,
4 RECOGNITION PRIZES

***RAIL BALTICA PROJECT –
CONNECTING COUNTRIES, CITIES, TOWNS,
PEOPLE, EVENTS & PROCESSES***



RĪGA RAILWAY STATION AROUND 1910

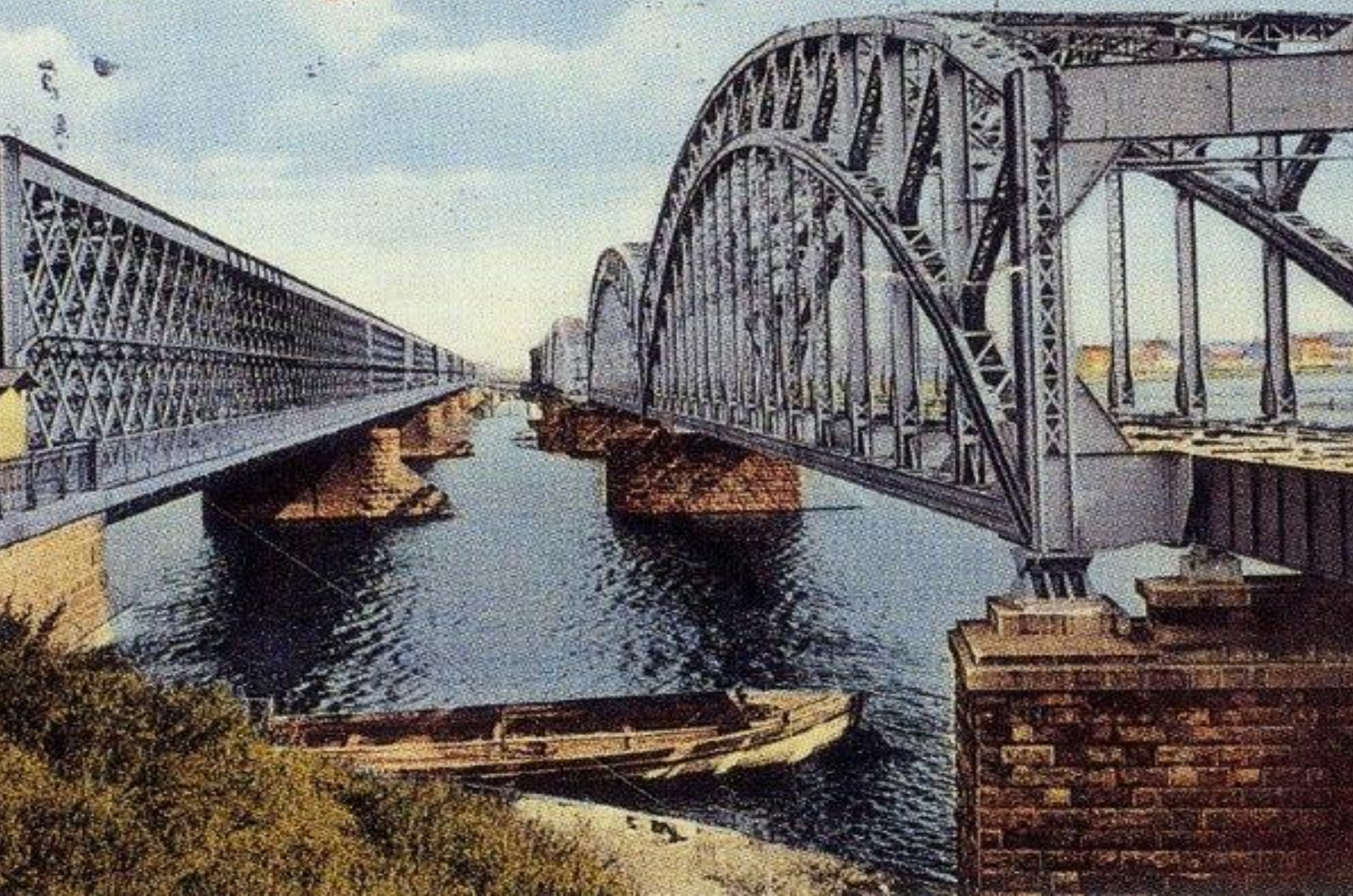






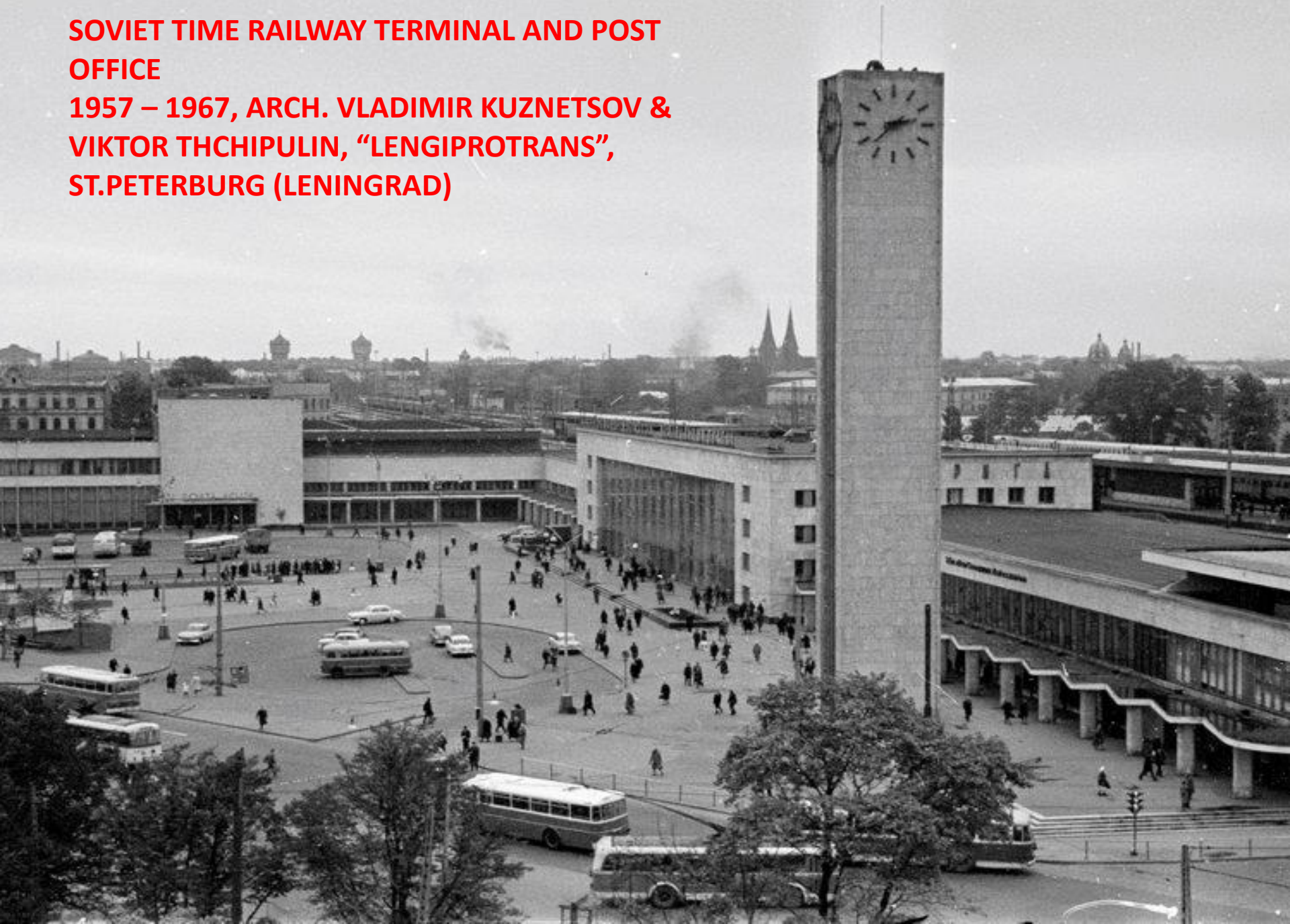
STACIJA RĪGA I. Gare Principale de Riga. Riga — Hauptbahnhof.

Рижскіе желѣзные мосты черезъ Двину
Rigas eiserne Brücken über die Düna.



**SOVIET TIME RAILWAY TERMINAL AND POST
OFFICE**

**1957 – 1967, ARCH. VLADIMIR KUZNETSOV &
VIKTOR THCHIPULIN, “LENGIPROTRANS”,
ST.PETERBURG (LENINGRAD)**



CENTRĀLĀ STACIJA



- STACIJA
- BOKSAJI
- TERMINALI



LATVIJAS DZELZĒĶI

PIECĀ
TRENĀ
TERMINĀL

LIDO LIDO



**DECISION MAKING
PROCESS IN LATVIA,
2015 – 2017,
15 MUNICIPALITIES ARE
INVOLVED**



EU



NEESMU PARLIECINĀTS,
KA MARSRUTĀ
VĒLADZĒŠA
IEKLAUT
RĪGU...

RAIL BALTICA
RĪGA

ĀTRVILCIENS
HELSINKI-
BERLĪNE

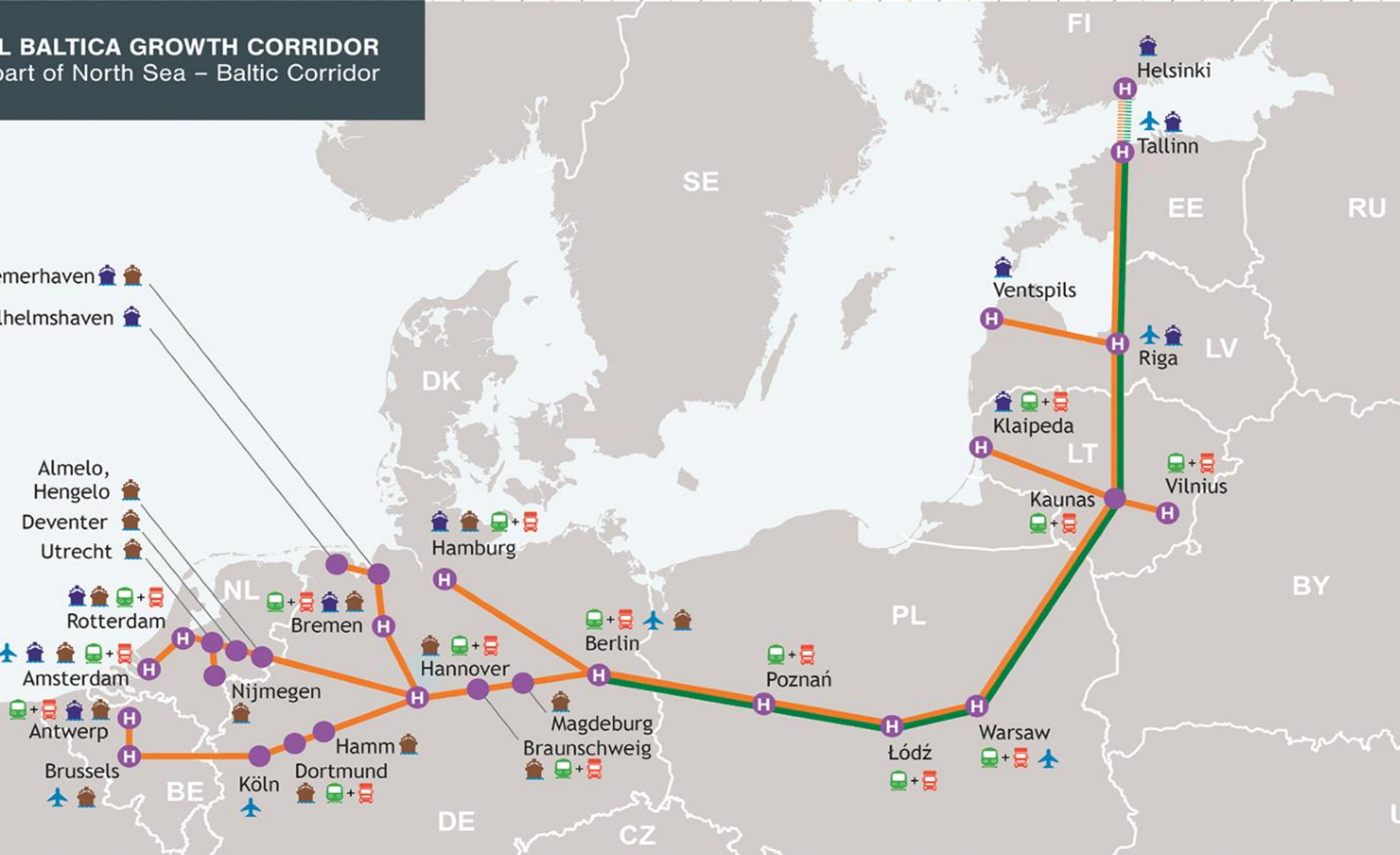
GB











Rail Baltica Growth Corridor




Part of North Sea – Baltic Corridor



LEGEND

-  Rail Baltica Growth Corridor
-  North Sea – Baltic Corridor
-  Ferry connection

-  Urban nodes, including their ports and airports
-  Other corridor nodes
-  Rail–road terminals in the core network

-  Airports to be connected TEN–T rail and road by 2025
-  Maritime ports to be connected to TEN–T rail and road by 2025
-  Inland core network ports



Rail Baltica project
TOTAL COSTS -
5.78 billion EUR

RAIL BALTICA –
FAST, SAFE AND ENVIRONMENTALLY FRIENDLY
RAIL CONNECTION TO EUROPE



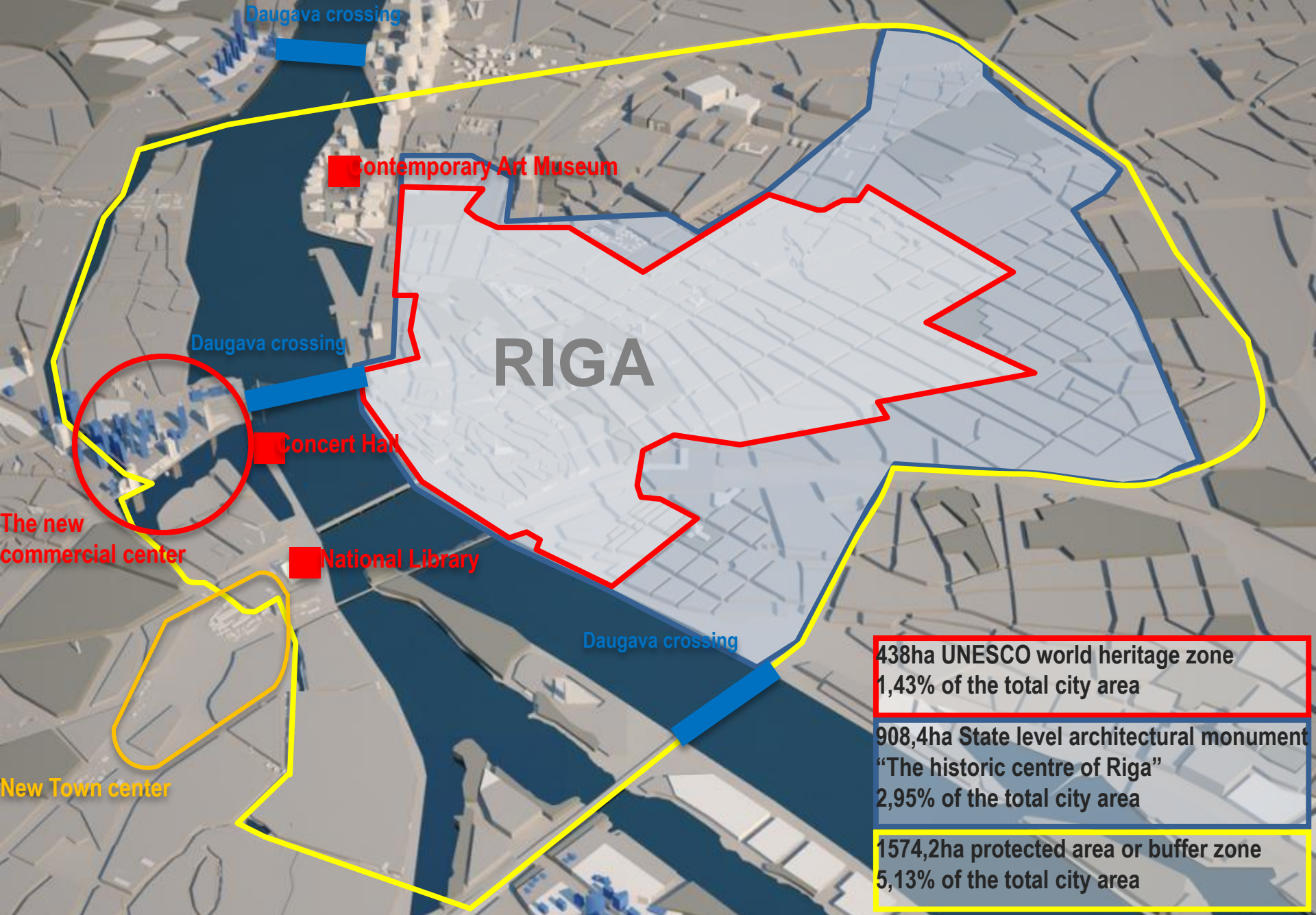


Vecrīga

- 1. Rīga (Central Station)
- 2. Rīga (Dzelzceļa stacija)
- 3. Rīga (Dzelzceļa stacija)
- 4. Rīga (Dzelzceļa stacija)
- 5. Rīga (Dzelzceļa stacija)

Latvijas Dzelzceļš

Map labels (streets and landmarks):
Smiļšu iela, Zīgrīda Annas Meierovica bulv.
Vērmanes dārzs
Inženieru iela, Arhitektu iela
Raiņa bulvāris, Merķeļa iela
Alfrēda Kalniņa iela, Marijas iela
Avotu iela
Zirgu iela, Valņu iela
Līvu laukums
Kalku iela, Riharda Vāgnera iela, Teātra iela
Valņu iela, Alfēda Kalniņa iela
Ernesta Birznieka-Upīša iela
Kalēju iela, Audeju iela, Valņu iela, Rado iela
Aspazijas bulv.
Kļavu iela
Satekles iela
Kungu iela, Kalēju iela
13. janvāra iela
Abrenes iela
Rūsiņa iela
Skrindu iela
Spīdolas iela
Maskavas iela, Turgeņeva iela, Gogoļa iela, Riņņiku iela
Elijas iela, Puskina iela
Jēzusbaznīcas iela, Jēzusbaznīcas iela
Gogoļa iela
Maskavas iela, Maskavas iela
Elijas iela, Dzirnavu iela
Strūgu iela, Dagdas iela, Natana Barkana iela
Kraša iela, Mazā Kraša iela, Maskavas iela, Mazā Kraša iela
Rūsiņa iela, Spīdolas iela, Krāslas iela, Firsa Sotoviņkova iela



- Design process resulted in a compromise which saw areas of high-rise buildings follow the main transport crossing over the river Daugava thus retaining the pyramidal nature of Old Riga as well as the potential for compact urban development.





**PLH ARCHITECTS,
COWI ENG.CUNSLTANTS,
DENMARK**

**PLH ARCHITECTS,
COWI ENG.CUNSLTANTS,
DENMARK**



R210G1

PLH ARCHITECTS,
COWI
ENG.CUNSLTANTS,
DENMARK



R210G1



O.R.V.E.L.
LATVIA

12:02
02.11.2022

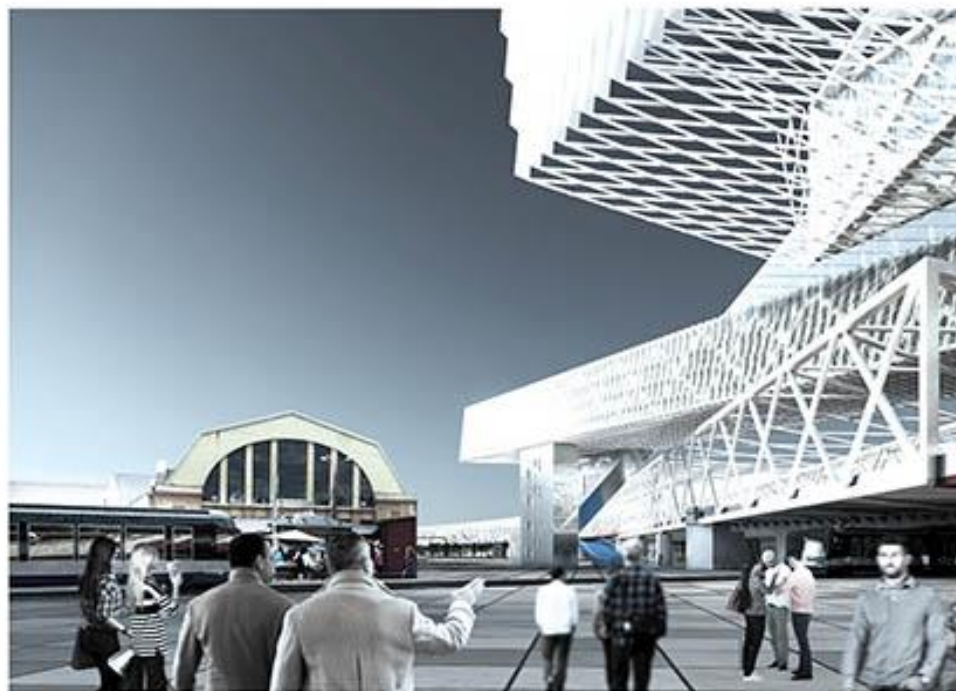
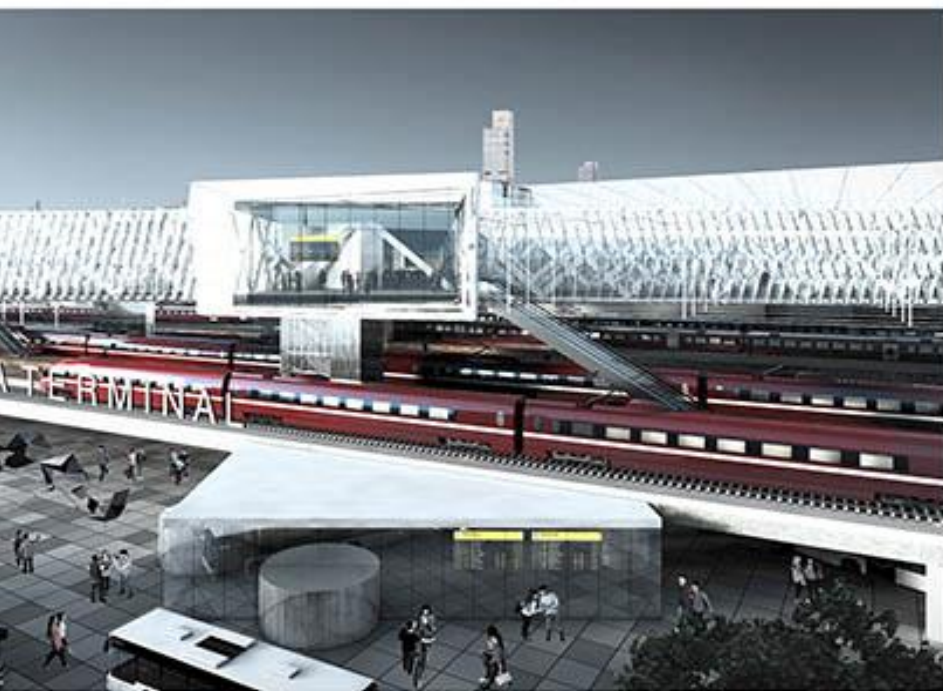
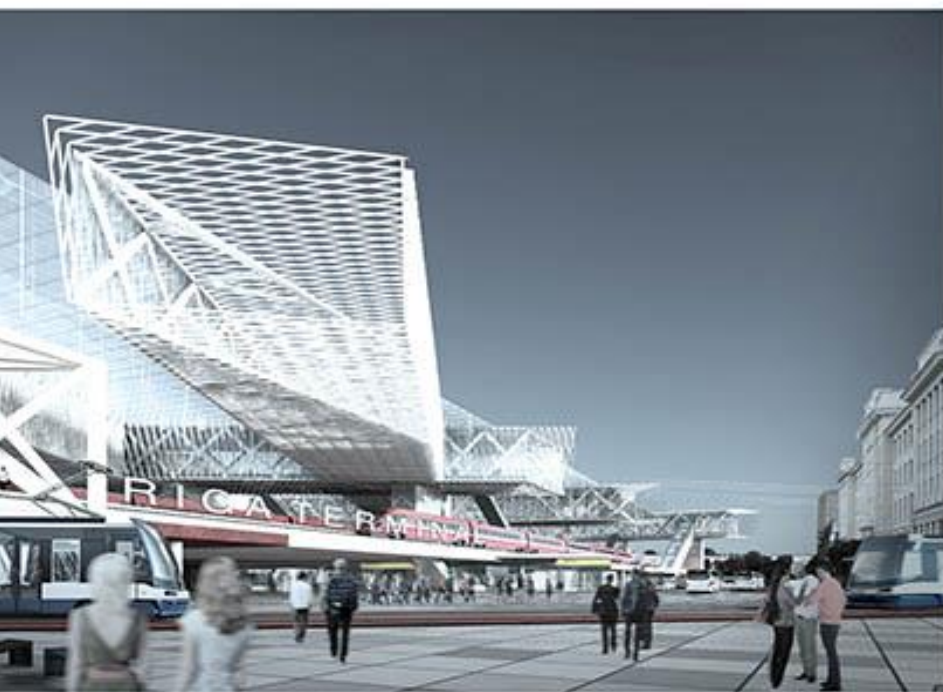
RĪGAS
CENTRĀLĀ
STACIJA



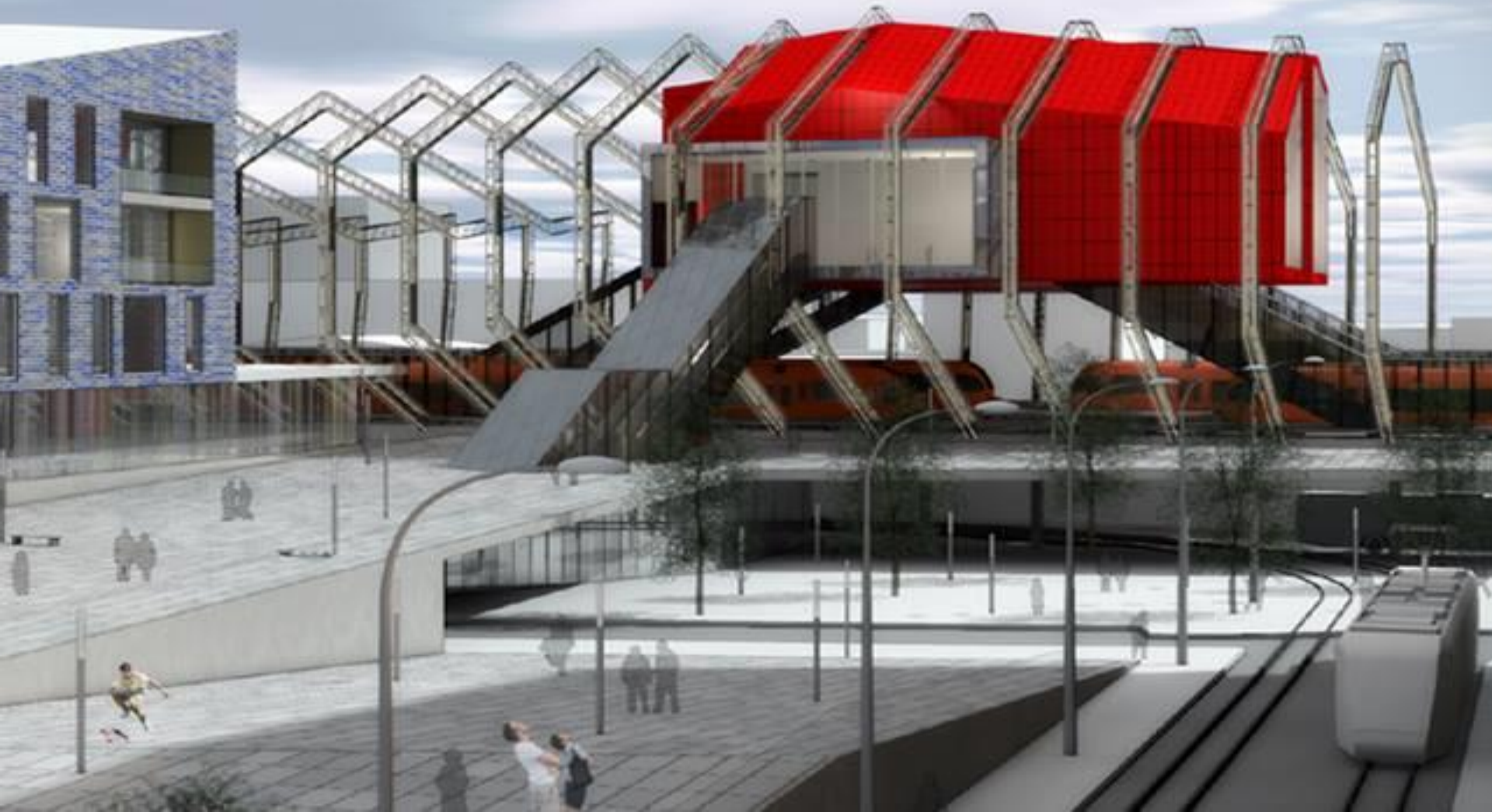


pedestrianized Daugava Old Railway Bridge





RAIL BALTICA TERMINAL IN TALLINN



PARNU TERMINAL



PARNU TERMINAL



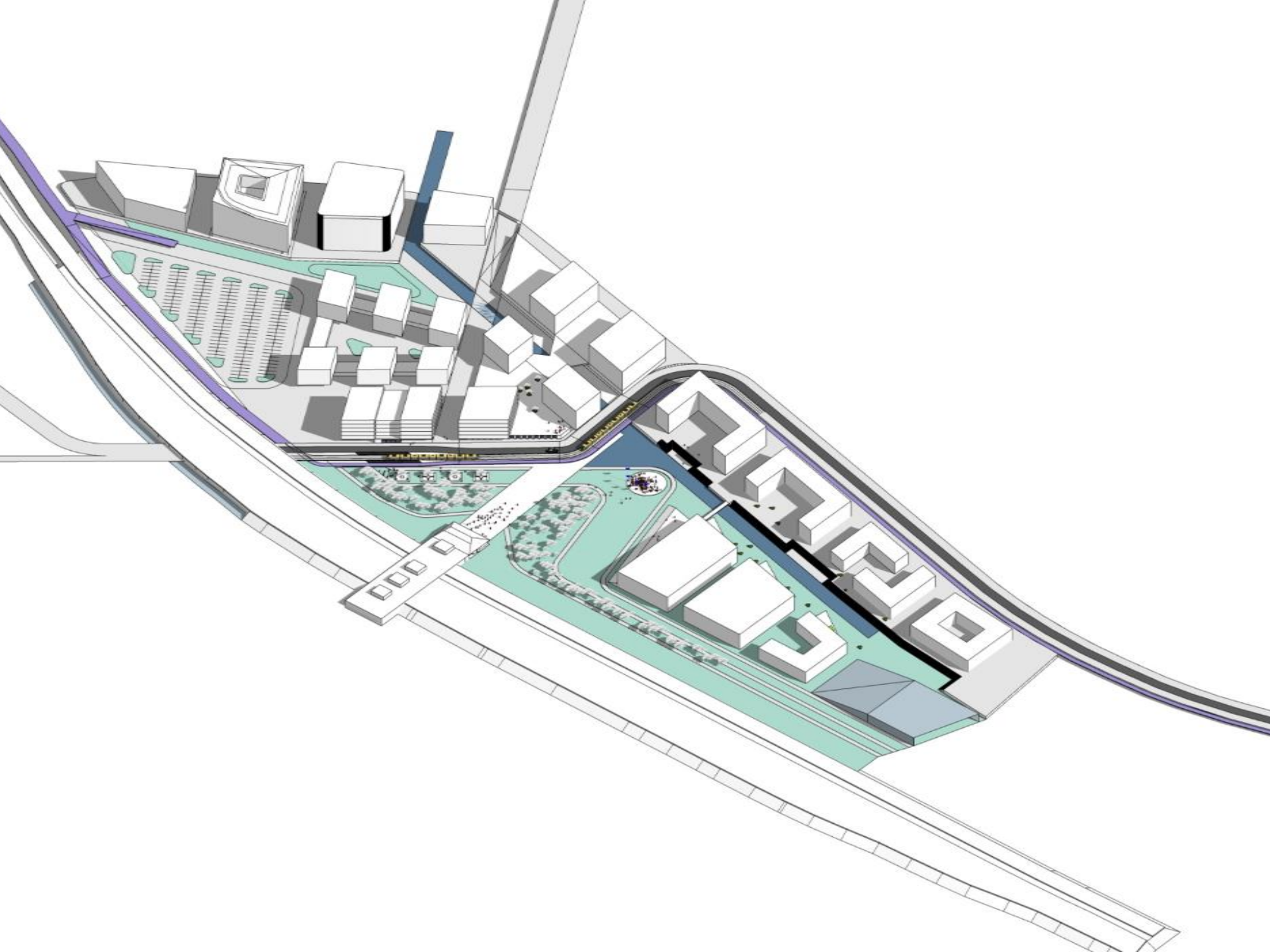
WATER STRIDER

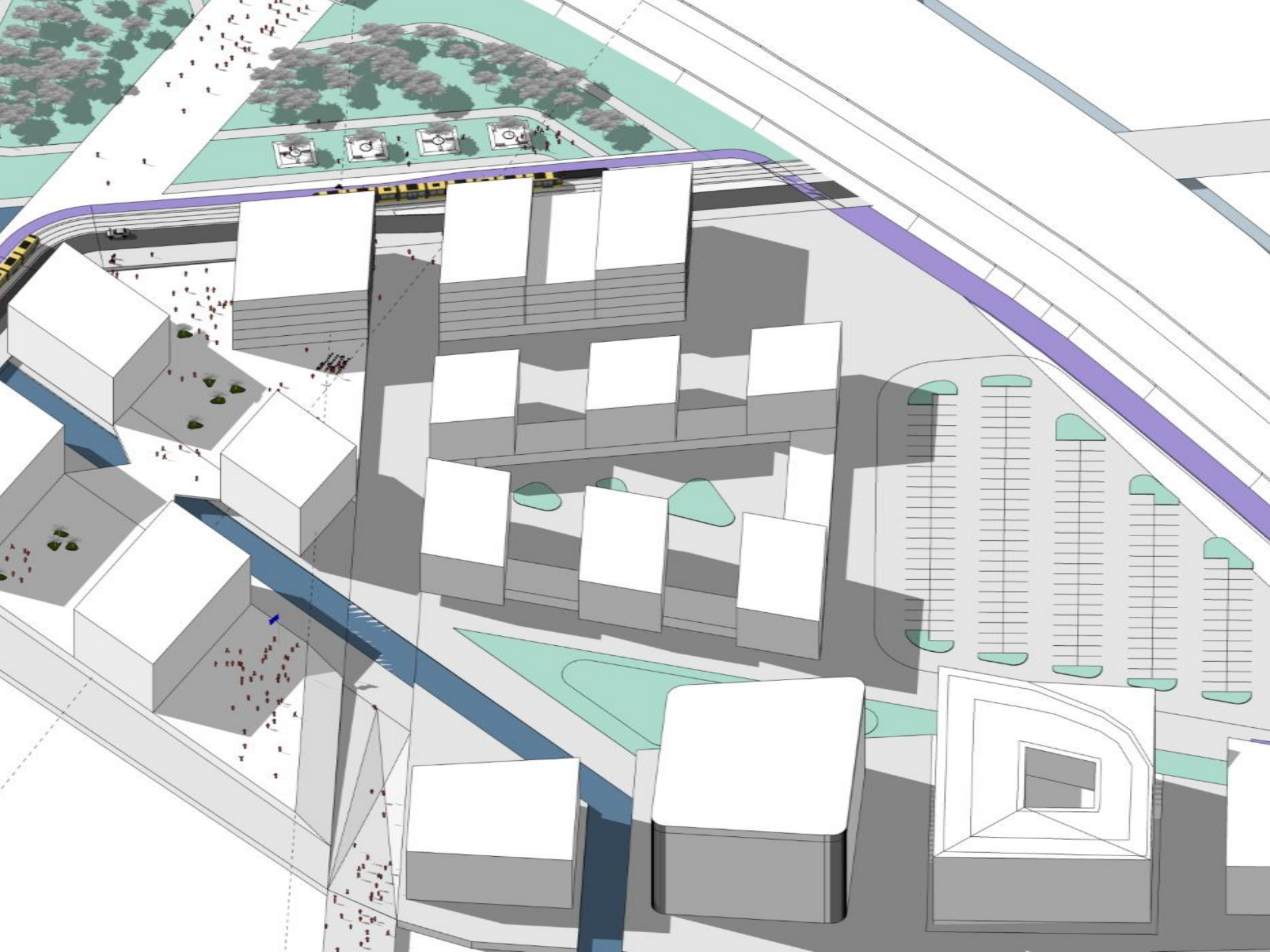
Arhitektuuribüroo





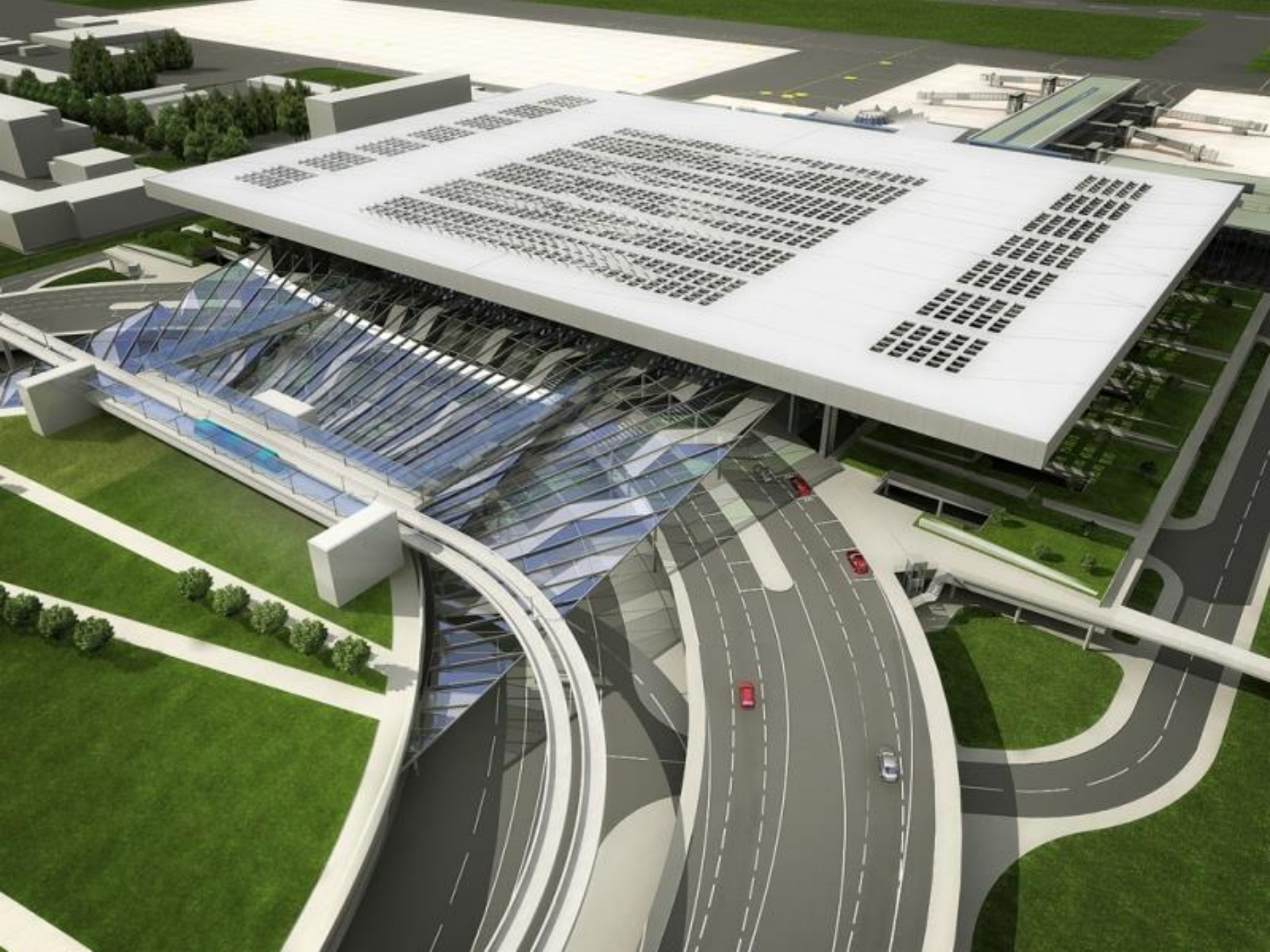




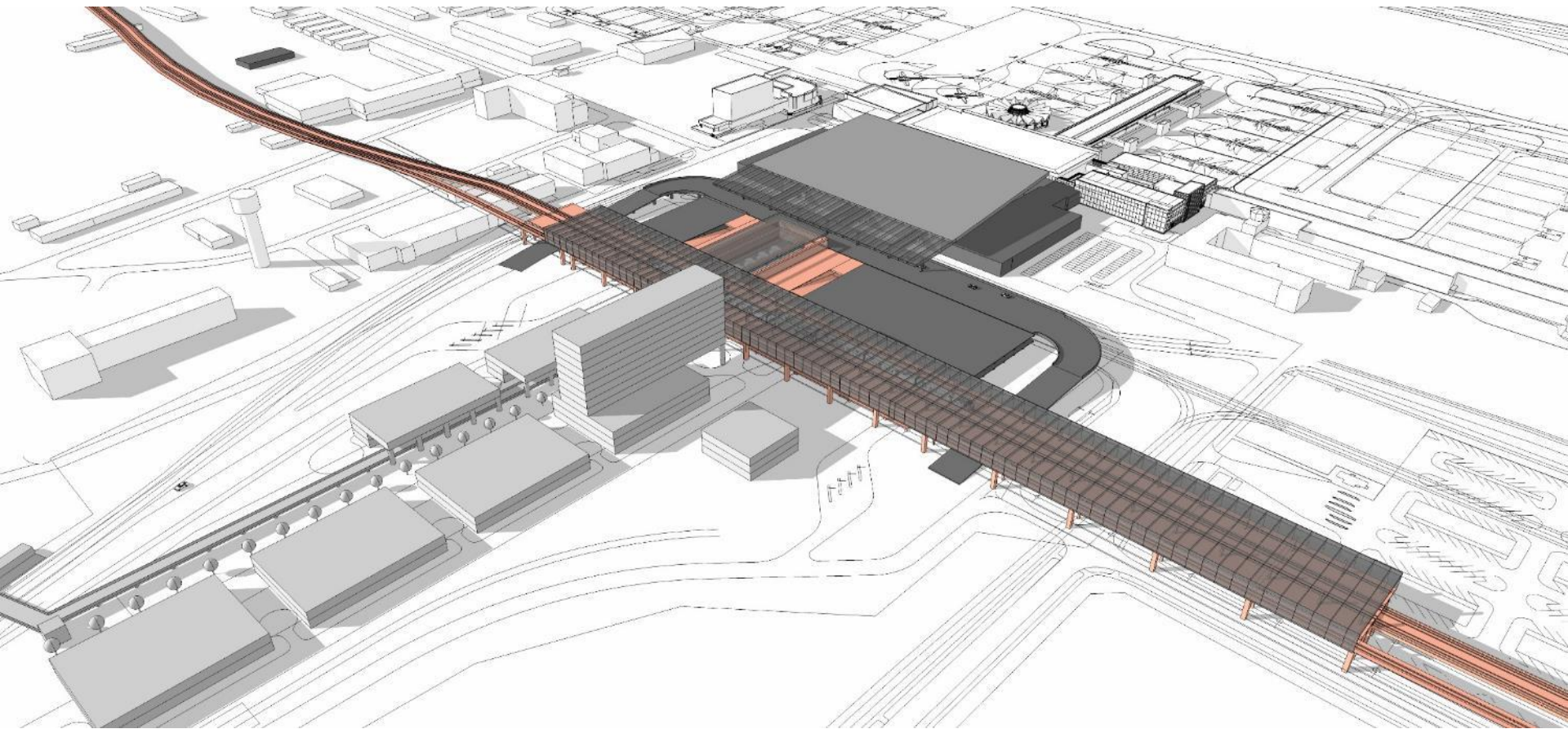


**RIGA INTERNATIONAL AIRPORT (RIX) –
FUNCTIONAL AND DESIGN
DEVELOPMENT**





RAIL BALTICA CONNECTION WITH RIGA INTERNATIONAL AIRPORT









ARH
IS







A photograph of a railway track in a foggy environment. The tracks curve to the left in the foreground. Overhead power lines and support poles are visible. A tall utility tower stands in the distance on the right. The overall scene is hazy and grey.

THANK YOU !

KLAIPEDA, 2017